

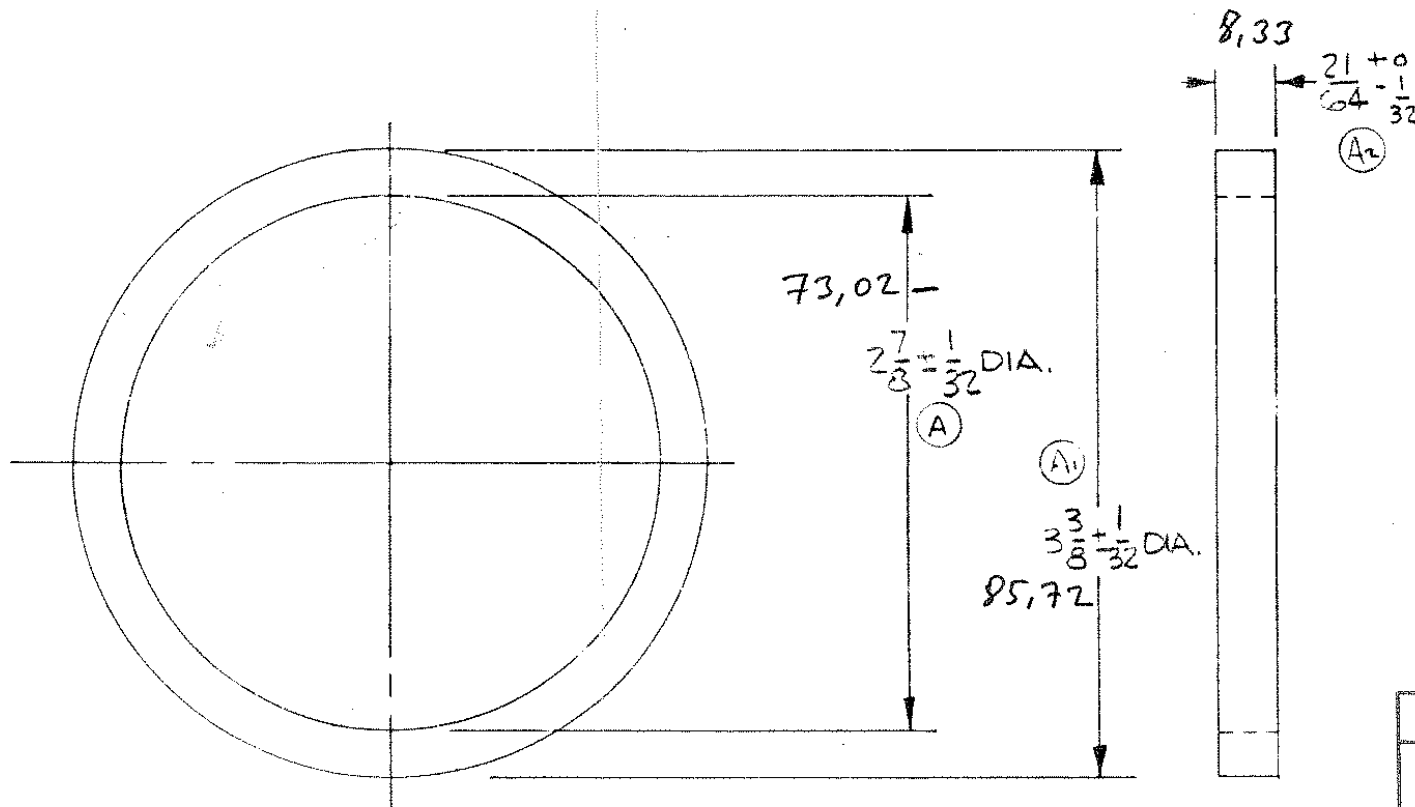
8255258

PERMISSIBLE VARIATION ON COMMON
FRACTION DIMENSIONS TO MACHINED SURFACES
TO BE ± 0.010 UNLESS OTHERWISE SPECIFIED.
FABRICATION TOLERANCE.

BREAK ALL SHARP
CORNERS UNLESS
OTHERWISE SPECIFIED.

COUNTERSINK ALL TAPPED
HOLES $1/8" \times$ ONE THR'D DEEP.

SURFACE FINISH SPECS.
IS IN ACCORDANCE
WITH G.M. ENGR. STDS.



Yer No Sira No

1 246

TB 1220

STANDARD PART

ENGINEERING APPROVAL
OF SOURCE REQUIRED

								MATERIAL		NAME OF PART		PART NO.		IT. NO.			
								EMS 644 GRADE 70		ELECTRO-MOTIVE DIVISION							
53104		C	MAT'L. WAS EMS 644		7-9-73	LAN	RT	RT	DR. David Reigh	DATE 9-13-57	GENERAL MOTORS CORPORATION						
43196		B	MATERIAL WAS SILICONE RUBBER		12-5-72	BRG	BRG	BRG	CK. [Signature]	DATE 9-13-57	LA GRANGE, ILLINOIS, U.S.A.						
		A=	WAS .313 \pm .010			ART					GASKET-2 FLANGE						
		A1	WAS 3.375 \pm .020			WELDS											
V-6591		A	WAS 2.867 \pm .020		3-17-59	J.K.	12/7		CH. DR. [Signature]	DATE 9-16-57	DATE OF PRINT		PART NO.				
R. F. C. NO.		REV. LET.		REVISION		DATE		BY		CK.		APV'D.					
FIRST USED ON		EX. 8578		GP9				MATERIAL NCI		ENGR. [Signature]				8255258			